

OFFICE BUILDING FOR LEASE or SALE

WOODRUFF PROFESSIONAL PLAZA

3242 S WOODRUFF AVE | IDAHO FALLS 83404



TURN-KEY MEDICAL OFFICE

FOR LEASE - SALE | 8,946 SF

CONTACT:

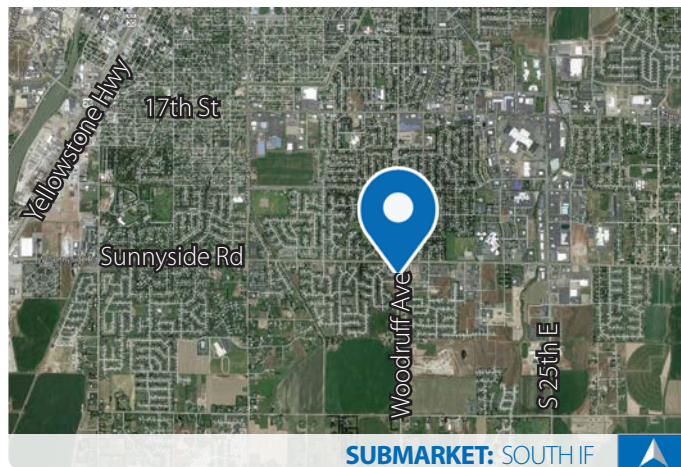
Brent Wilson, CLS

✉ brent@tokcommercial.com

Brian Wilson

✉ brian@tokcommercial.com

Ph: 208.227.8148



SUBMARKET: SOUTH IF

PROPERTY INFORMATION:

Submarket: South Idaho Falls
Bldg Type: Office
Bldg Size: 8,946 SF
Divisible: To 4,473 SF
Parking: Ample On-Site
Available: Immediately

TERMS:

Sale Price: \$1,870,000 | \$209/SF
Lease Rate: CONTACT AGENT

LISTING COMMENTS:

Located at signalized hard corner.
Excellent access and visibility.
Monument signage on the corner of Sunnyside and Woodruff Ave.
Traffic counts of 26,000 vpd.
Turn-key medical office space.
Ample parking.

WOODRUFF PROFESSIONAL PLAZA

PROPERTY PHOTOS INTERIOR



This information was obtained from sources believed reliable but cannot be guaranteed. Any opinions or estimates are used for example only.

OFFICE BUILDING FOR LEASE or SALE
WOODRUFF PROFESSIONAL PLAZA

PROPERTY PHOTOS
EXTERIOR



PARCEL MAP

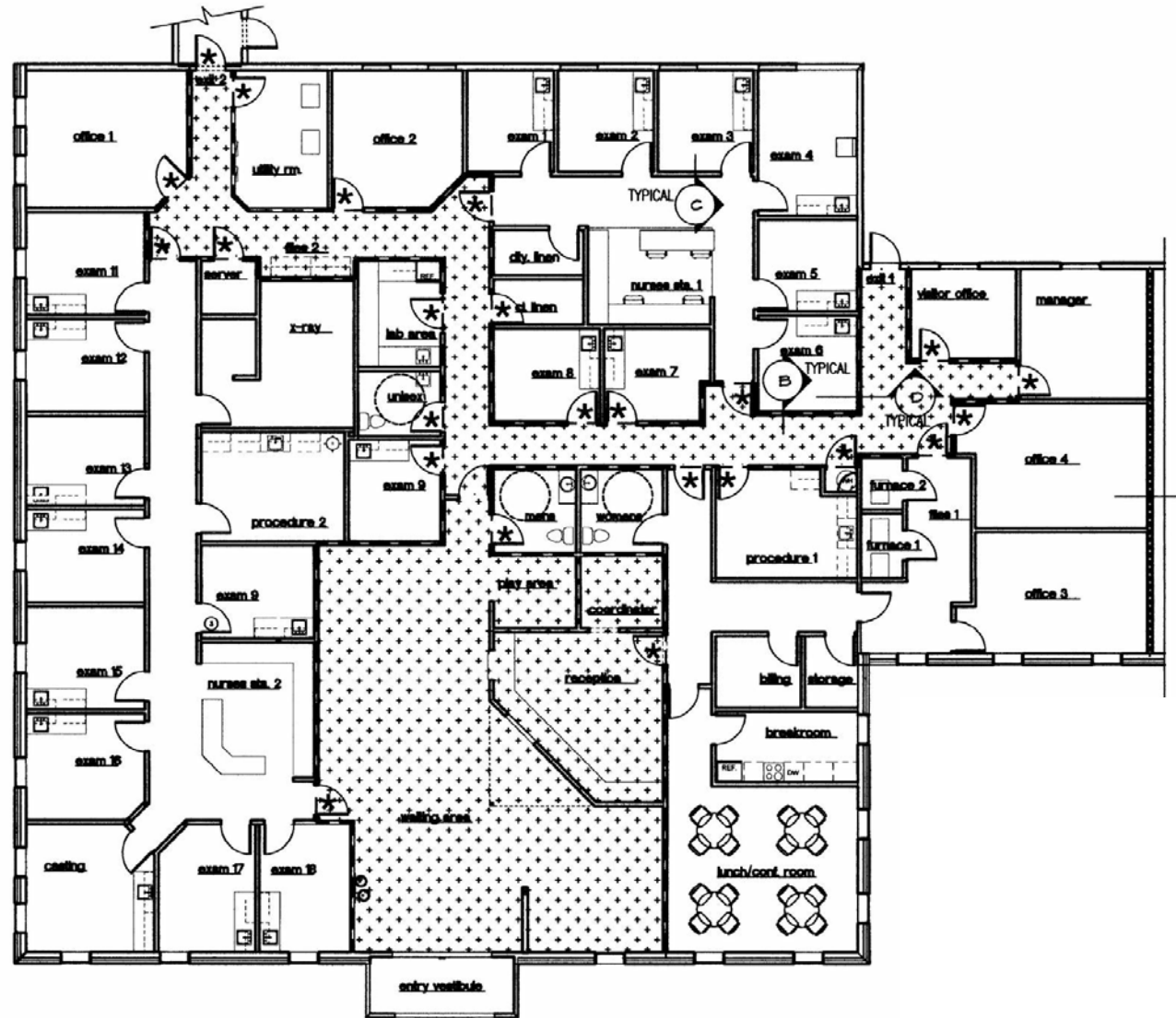


This information was obtained from sources believed reliable but cannot be guaranteed. Any opinions or estimates are used for example only.

WOODRUFF PROFESSIONAL PLAZA

FLOOR PLAN

8,946 SF AVAILABLE



This information was obtained from sources believed reliable but cannot be guaranteed. Any opinions or estimates are used for example only.

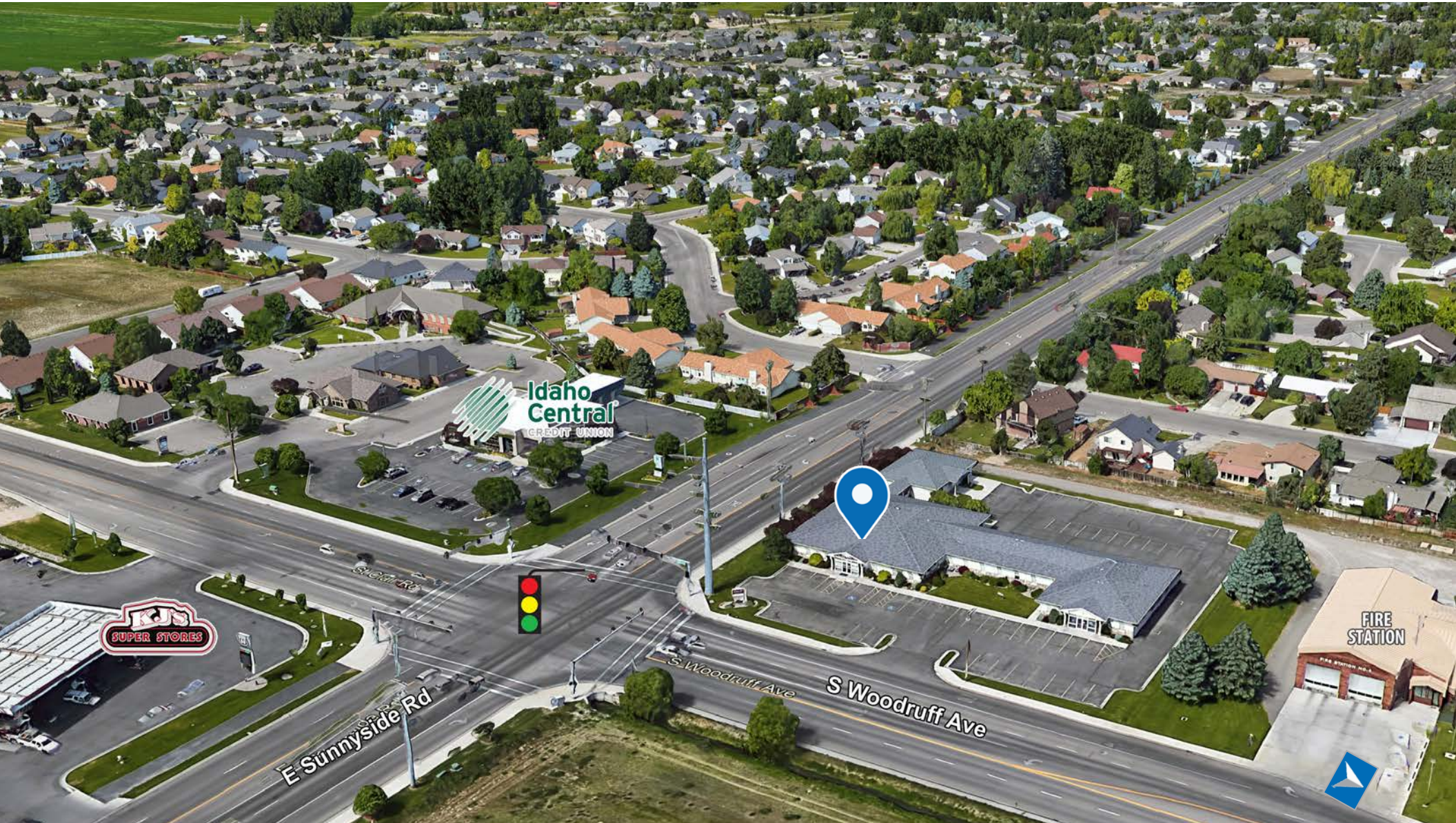
THORNTON OLIVER KELLER

COMMERCIAL REAL ESTATE

Experience Results.

OFFICE BUILDING FOR LEASE or SALE

WOODRUFF PROFESSIONAL PLAZA



This information was obtained from sources believed reliable but cannot be guaranteed. Any opinions or estimates are used for example only.

WOODRUFF PROFESSIONAL PLAZA

